



PREPARED EXCLUSIVELY FOR FFI MEMBERS

Featuring the FFI Organizational Members: Part II

JUNE 26, 2020



In March, we featured seven of the **FFI organizational members**.

Today, in our second issue of this year's series, we are pleased to highlight distinguished organizations and educational institutions that are FFI organizational members.

BDO ADVISORY BV



BDO Advisory BV, based in the Netherlands, is an accounting and financial consultancy, working with families and family enterprise to secure stability and plan for the future. FFI members are Ruud Loos, Michel Prent, CFBA/CFWA, Bram Tijssen, and Edvard van de Vijver, FFI Fellow.



Ruud Loos



Michel Prent



Bram Tijssen



Edvard van de Vijver

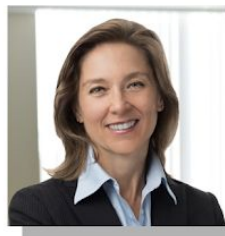
BURNS & LEVINSON



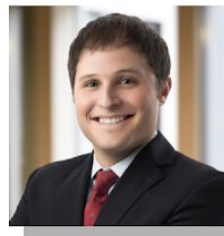
Burns & Levinson is a Boston-based law firm that provides a team approach with clients by utilizing all the talent available within the firm and partnering with others to meet clients' needs. The firm has extensive experience representing founder and family-owned businesses since its founding in 1960 and the team is sensitive to the dynamic of family and business issues and understands the clients' needs for a multi-disciplinary team approach. The firm is also a sponsor of the FFI New England Chapter. FFI members are Brian Bixby, Christine Fletcher, David Raymon, and Lorraine Stark.



Brian Bixby



Christine Fletcher



David Raymon



Lorraine Stark

FAMILY ENTERPRISE XCHANGE



Family Enterprise Xchange is a Canadian organization for family enterprises. Its goal is to empower enterprising families and their advisers so they can succeed and flourish. To achieve this, FEX provides business families and their advisers with a unique blend of shared wisdom and experience and leading-edge thinking and knowledge. FFI members are Russel Baskin, who served on this year's FFI Nominating Committee, Bill Brushett, Sheila Scott, and Ruth Steverlynck, CFBA.



Russel Baskin



Bill Brushett



Sheila Scott



Ruth Steverlynck

GRANT THORNTON SWEDEN



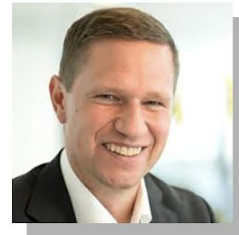
Grant Thornton Sweden is a growth company that focuses on privately held entrepreneurial businesses, providing customers with professionalism, expertise, and personal touch. It is committed to helping dynamic companies to grow and become successful. FFI members are Per Gardelin, Julia Höglund, Henrik Johansson, Larissa Keijzer, and Helena von der Esch, who is a member of the FFI Global Education Network (GEN) faculty.



Per Gardelin



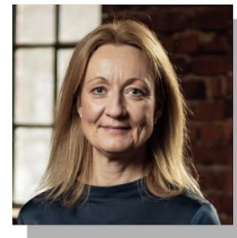
Julia Höglund



Henrik Johansson



Larissa Keijzer



Helena von der Esch



KPMG PRIVATE ENTERPRISE



KPMG Private Enterprise Family Business advisors understand the dynamics of a successful family business and work with clients to provide tailored advice and experienced guidance to help them succeed. To support the unique needs of family businesses, KPMG Private Enterprise coordinates with a global network dedicated to offering relevant information and advice to family-owned businesses. Nearly 100 KPMG professionals belong to FFI, and Global Family Business Centre of Excellence Director Daniel Trimarchi is a member of the 2020 FFI Global Conference Program Committee. Congratulations to Bernadeene Cangelosi, CFBA/CFWA, and Katerina Polyzoi, CFBA, who completed the GEN certificate program in March.



Daniel Trimarchi



Bernadeene Cangelosi



Katerina Polyzoi

PRAIRIE FAMILY BUSINESS ASSOCIATION



Prairie Family Business Association (PFBA) is an outreach center of the Beacom School of Business at the University of South Dakota that offers family businesses a platform to achieve harmony and longevity. PFBA provides family businesses with the tools to succeed through high quality education and collaboration. FFI members are Larry D. Hause, FFI Fellow; Sandra McNeely, FFI board member and treasurer; and Suzy Turnquist.



Larry Hause



Sandra McNeely



Suzy Turnquist

SANDAIRE INVESTMENT OFFICE

The logo for Sandaire Investment Office, featuring the word "SANDAIRE" in a bold, orange, sans-serif font.

Sandaire is a London-based, international investment office delivering tailored solutions for wealthy families and foundations. Family-owned and professionally managed, the firm has a 22-year history that provides unique insights into the evolving opportunities and challenges that wealth creates, understanding that there is more to wealth than just investment performance. Sandaire is also a founding member of the **Wigmore Association**, an innovative group of leading single and multi-family offices from across the globe that provides a forum in which members can share knowledge and best practice with fellow experts, seeking to enhance understanding of issues that are important to clients, while retaining objectivity and independence. FFI members are Charlotte Filsell, James Fleming, Alexander Scott, and Janet Tarbet.



Charlotte Filsell



James Fleming



Alexander Scott



Janet Tarbet

UNIVERSIDAD DE MONTERREY CENTER FOR FAMILY BUSINESS



Universidad de Monterrey (UEM) Center for Family Business, founded in 1999, provides consultancy and advice to business families. The Center's services support the preservation of the family entrepreneurial legacy and enable the transformation of the governing bodies and communication schemes of the business family. FFI members are Pepe Bucio, Salvador Guajardo, María Eloísa Treviño, and José Ángel Vázquez.



Pepe Bucio



Salvador Guajardo



María Eloísa Treviño



Jose Angel Vazquez

FFI ORGANIZATIONAL MEMBERS

[VIEW COMPLETE LISTING](#)

[VIEW MEMBERSHIP DETAILS](#)

FFI is the leading association worldwide and the organization of choice for advisors, consultants, educators, researchers, and family enterprise members who help perpetuate trans-generational family business wealth.

FFI | On Monday

Many thanks to everyone who participated in the FFI on Monday series, which ends next week, and especially to the presenters:

John W. Ambrecht

Ambrecht & Associates

Carmen Bianchi

Carmen Bianchi Family Business
Associates

Andrea Calabrò

STEP Project

François de Visscher

de Visscher & Co.

Ramsey Goodrich

Carter Morse & Goodrich

Terence Hannafin

Carter Morse & Goodrich

Mae Hong

Rockefeller Philanthropy Advisors

James Olan Hutcheson

ReGENERATION Partners

David Karofsky

The Family Business Consulting Group, Inc.

Paul Karofsky

Transition Consulting Group

Paul Lermite

Legacy Family Office, Ltd.

Ian Macnaughton

Transition Point Coaching

Ken McCracken

MFBC Limited

Greg Owen-Boger

Turpin Communication

Salvatore Tomaselli

University of Palermo

Michael D. Whitty

Freeborn & Peters LLP

Jack Wofford

PREVIOUS EDITION



The FFI board of directors provides strategic vision and oversight for the development of the organization. Over the past few months, the 2020 Nominating Committee has solicited suggestions for nominees, and interviews with potential candidates have been held. The Committee is pleased to announce the following nominees for four-year terms on the FFI Board of Directors. Voting will be conducted by electronic ballot, which will be sent to FFI members in late August. New board members will take office following the annual meeting held in October.

[READ MORE](#)

DATES TO REMEMBER

JUN
29

FFI On Monday with James Olan Hutcheson

Behavioral Economics and CEO Decision Making in Family Firms

[REGISTER FOR 10:00AM ET](#)

JUL
1

Last day to submit a case for the Family Enterprise Case Competition

[VIEW DETAILS](#)