



PREPARED EXCLUSIVELY FOR FFI MEMBERS

Featuring the FFI Organizational Members

FEBRUARY 19, 2021



We are pleased to feature the following distinguished organizations and educational institutions that are FFI organizational members for 2021. This issue will be the first in a continuing series throughout the year.

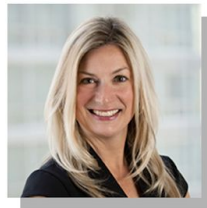
ALLIANT PRIVATE CLIENT



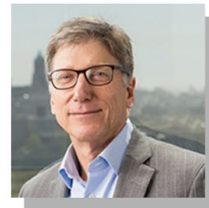
Alliant Private Client, a division of Alliant Insurance Services, manages the insurance needs for affluent individuals and families who require a sophisticated approach to personal risk management. Alliant's Family Enterprise Risk Practice provides a suite of specialty insurance services that address the complex risks of business owning families and family offices. FFI members from Alliant Private Client include FFI Fellow Linda Bourn, Courtney Eber, Paul Funk, Steven Kent, and Lori Quinn.



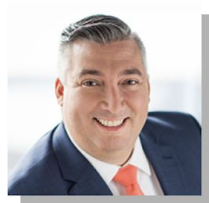
Linda Bourn
FFI Fellow



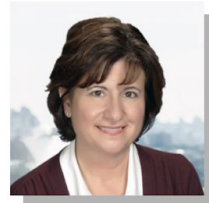
Courtney Eber



Paul Funk



Steven Kent



Lori Quinn

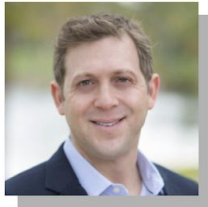
BANYANGLOBAL FAMILY BUSINESS ADVISORS



BanyanGlobal advises the owners of the world's leading family enterprises as they make difficult decisions during transitions. When set up thoughtfully, a family's involvement with these enterprises is often the key to their longevity.

FFI members are Josh Baron; Nick Di Loreto; Ben Francois; Rob Lachenauer; Aline Porto; and Marion McCollom Hampton, FFI Fellow, former FFI board member, and recipient of the Richard Beckhard Practice Award.

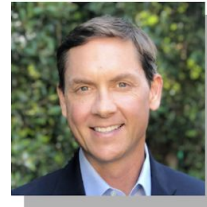
Josh Baron and Rob Lachenauer's new book, ***The Harvard Business Review Family Business Handbook: How to Build and Sustain a Successful, Enduring Enterprise***, is available now.



Josh Baron



Nick Di Loreto



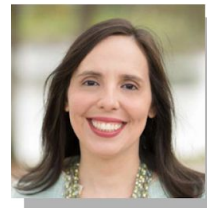
Ben Francois



Marion McCollom Hampton
FFI Fellow



Rob Lachenauer



Aline Porto

EDHEC BUSINESS SCHOOL



EDHEC Business School was created in 1906 by and for entrepreneurs and has embodied the fundamental values of business for over a century. The **EDHEC Family Business Research Center** was founded in 2012 with the mission to inspire and support family business communities and their stakeholders in sustaining the long-term entrepreneurial model across generations. It offers a holistic approach to the family business encompassing financial and socio-emotional dimensions at each level of its research, education, and dissemination activities.

FFI members are Fabian Bernhard, FFI Fellow and board member; Ludovic Cailluet; Rania Labaki, FFI Fellow and recipient of the 2020 Barbara Hollander Award, 2015 *FBR* Best Article Award, and the 2012 Best Dissertation Award; Elie Salameh; and FFI Fellow Lorraine M. Uhlaner.



Fabian Bernhard
FFI Fellow



Ludovic Cailluet



Rania Labaki
FFI Fellow



Elie Salameh



Lorraine M. Uhlaner
FFI Fellow

GRADDHA



Graddha is an office founded and led by husband and wife team Marlis and Kjartan Jansen. With more than forty years' combined experience in human health, psychology and finance, Graddha strives to promote human connection, empowerment, and creativity by understanding wealth in all its forms. Graddha serves individuals, couples, families and their family offices to support multigenerational cohesion and stewardship. In addition, Marlis and Kjartan serve on the boards of Marlis' family's family office and foundation.

FFI members are Kjartan Jansen and Marlis Jansen.



Kjartan Jansen



Marlis Jansen

INSTITUUT VOOR HET FAMILIEBEDRIJF



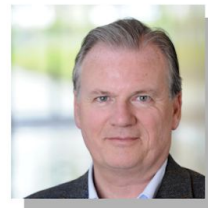
The Institute for Family Business (IFB) is a knowledge center for family businesses in Flanders. The IFB wants to inform, advise and guide family businesses on all aspects that characterize family business. In this way, the Institute wants to contribute to the professionalization, continuity and further development of family businesses in Flanders. Based on its ambition to be a thought leader for family business leaders, the Institute for Family Business takes initiatives regarding education, networking, research, advocacy and international contacts. FFI members are FFI Fellow Sofie Lerut, FFI Fellow and former board member Józef Lievens, and Patrick De Schutter, the Institute's co-founder and co-managing director.



Sofie Lerut
FFI Fellow



Józef Lievens
FFI Fellow



Patrick De Schutter

LANSBERG, GERSICK & ASSOCIATES, LLC

LANSBERG·GERSICK

Lansberg, Gersick & Associates is a global consulting and research firm that supports the continuity of enterprising families over generations, including advice on governance design, succession planning, leadership development, and philanthropic strategy.

FFI members include Ashley Blanchard, Don Carlson, Gustavo A. Carvajal, FFI Fellow Neus Feliu Costa, Devin DeCiantis, FFI Fellow Michèle Desjardins, Maria Cecilia Escallon, FFI Fellow Kelin Gersick, FFI Fellow Katherine Grady, Nathan Hamilton, Nicolas Hollanders de Ouderaen, Maria Fernanda Jaramillo, FFI Fellow Ivan Lansberg, FFI Fellow María Dolores Moreno, Christopher Robichaud, FFI Fellow Wendy R. Ulaszek, and Francisco Valera.



Neus Feliu Costa
FFI Fellow



Michèle Desjardins
FFI Fellow



Kelin Gersick
FFI Fellow



Katherine Grady
FFI Fellow



Ivan Lansberg
FFI Fellow



María Dolores Moreno
FFI Fellow



Wendy R. Ulaszek
FFI Fellow

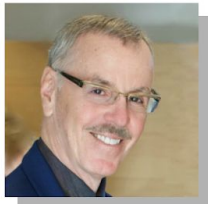
Ivan and Kelin have been co-editors of *FBR* and LGA has sponsored the *FBR* Best Article Award. Neus is a member of the GEN 503 faculty.

[LISTEN TO THE AWARDS CEREMONY IN WHICH KELIN PRESENTS THE 2020 FBR AWARD](#)

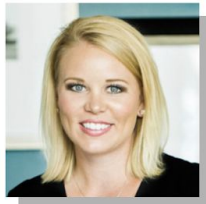
REGENERATION



REGENERATION has focused on supporting family businesses for more than 20 years, helping clients increase business and wealth while strengthening their families. FFI members include Michael Cofield, FFI Fellow Elle Hansen, FFI Fellow and 2009 recipient of the Richard Beckhard Practice Award James O. Hutcheson, and Mary Ann Zimmerman.



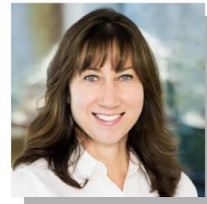
Michael Cofield



Elle Hansen
FFI Fellow



James O. Hutcheson
FFI Fellow



Mary Ann Zimmerman

FFI ORGANIZATIONAL MEMBERS

[VIEW A COMPLETE LISTING OF FFI ORGANIZATIONAL MEMBERS](#)

[VIEW MEMBERSHIP DETAILS](#)

PREVIOUS EDITION



We are pleased to provide you with an advance look at the March 2021 issue of *Family Business Review (FBR)*.

As an FFI member, you have access to the complete library of *FBR* articles at no charge.

To access back issues of *FBR*, follow these instructions:

1. Log in to your FFI member account
2. Then click: my.ffi.org/page/family-business-review
3. Click the link on this page to go to *Family Business Review* and you will automatically be redirected and logged in to *FBR* to begin reading.

[READ MORE](#)



DATES TO REMEMBER

MAR
01

Deadline for Best Doctoral Dissertation Submissions

[VIEW DETAILS](#)

Last day to enroll in GEN Q1 courses

[LEARN MORE AND ENROLL](#)

MAR
10

MidWest Chapter Virtual meeting

[LEARN MORE AND REGISTER](#)

MAR
31

Last day to enroll in the C&S Directory for April 01, 2021 – March 31, 2022

[LEARN MORE AND ENROLL](#)

APR
01

Last day to enroll in Advanced Certificates special offer

[LEARN MORE AND ENROLL](#)

APR
12 –
13

GEN 503: Tools for Positive Change in Family Business Systems: Analysis and application

[LEARN MORE AND ENROLL](#)

APR
15

Last day for Best Unpublished Research Paper Submissions

[VIEW DETAILS](#)

Last day to enroll for Achievement Award Nominations

[VIEW DETAILS](#)

Last day to enroll for GEN scholarships

[VIEW DETAILS](#)

APR
19 –
20

GEN 504: Philanthropy, Investing and the Enterprise: Advising families in pursuit of impact

[LEARN MORE AND ENROLL](#)