



PREPARED EXCLUSIVELY FOR FFI MEMBERS

Featuring the 2021 FFI Organizational Members – Part VI

JULY 30, 2021



Today, in our sixth issue of this year's series on FFI organizational members, we are pleased to feature the following distinguished associations, educational centers, and professional organizations.

BDO ADVISORY BV



BDO Advisory BV, based in the Netherlands, is an accounting and financial consultancy, working with families and family enterprise to secure stability and plan for the future. FFI members are Machiel Gosschalk, ACFBA, Ruud Loos, Michel Prent, CFBA/CFWA, and Edvard van de Vijver, FFI Fellow.



Machiel Gosschalk
ACFBA



Ruud Loos



Michel Prent
CFBA/CFWA



Edvard van de Vijver
FFI Fellow

EY GLOBAL FAMILY ENTERPRISE CENTER OF EXCELLENCE



EY Global Family Enterprise Center of Excellence is designed to support family businesses, their owners, and their managers, wherever they operate in the world. The Center brings together advisors from the EY global network to share knowledge and insight to address family business challenges and provide seamless services for internationally based family-owned companies. EY has more than 100 FFI members from more than 30 countries, many of whom have earned a GEN certificate or are currently enrolled in the program.

Alexander Hayward is a GEN faculty member and is presenting at the in-person FFI Global Conference on Friday, October 22. Marko Nikolić, CFBA, is on the 2021 FFI Conference Program Committee. He is co-presenting with David Bowen at the FFI Global Conference on October 22.



Puneet Anand
CFBA



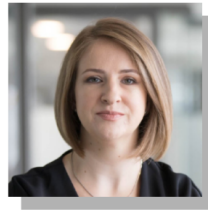
Pablo Greiber
CFBA



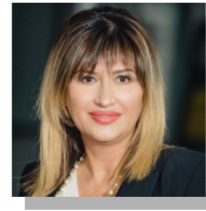
Alexander Hayward
GEN Faculty, CFWA



Diego León
ACFBA



Corina Anamaria Mîndoiu
CFBA



Mihaela Mitroi
CFBA



Marko Nikolić
CFBA



Priscilla Rocha Carrilho Pessoa
CFBA



Roman Schneider
ACFBA, ACFWA



Tang Sze Kiu, Carrie
CFWA



Wong Man Fai, Karina
CFBA



Wong Mei Yin, May
CFBA, CFWA

FAMILY ENTERPRISE CANADA



Family Enterprise Canada is a Canadian organization for family enterprises. Its goal is to empower enterprising families and their advisors so they can succeed and flourish. To achieve this, Family Enterprise Canada provides business families and their advisors with a unique blend of shared wisdom and experience and leading-edge thinking and knowledge. FFI members are Russel Baskin, Bill Brushett, Sheila Scott, and FFI Fellow Ruth Steverlynck.



Russel Baskin



Bill Brushett



Sheila Scott



Ruth Steverlynck
FFI Fellow

KPMG PRIVATE ENTERPRISE



KPMG Private Enterprise Family Business advisors understand the dynamics of a successful family business and work with clients to provide tailored advice and experienced guidance to help them succeed. To support the unique needs of family businesses, KPMG Private Enterprise coordinates with a global network dedicated to offering relevant information and advice to family-owned businesses. Nearly 100 KPMG professionals belong to FFI. Richa Arora and Stavros Demetriou are co-presenting at the Virtual FFI Global Conference on October 18, and Richa Arora is a 2021 nominee for the FFI Board of Directors. Tom McGuinness is co-leader of KPMG Enterprise Family Business. Daniel Trimarchi is Global Family Business Centre of Excellence Director.



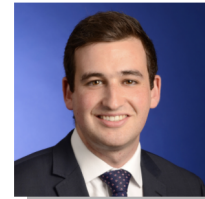
Richa Arora



Stavros Demetriou



Tom McGuinness



Daniel Trimarchi

UNIVERSIDAD DE MONTERREY CENTER FOR FAMILY BUSINESS



Universidad de Monterrey (UEM) Center for Family Business, founded in 1999, provides consultancy and advice to business families. The Center's services support the preservation of the family entrepreneurial legacy and enable the transformation of the governing bodies and communication schemes of the business family. FFI members are Pepe Bucio, Salvador Guajardo, María Eloísa Treviño, and José Ángel Vázquez.



Pepe Bucio



Salvador Guajardo



María Eloísa Treviño



José Ángel Vázquez

PREVIOUS EDITION



The FFI board of directors provides strategic vision and oversight for the development of the organization. Over the past few months, the 2021 Nominating Committee has solicited suggestions for nominees, and interviews with potential candidates have been held. The Committee is pleased to announce the following nominees for four-year terms on the FFI Board of Directors. Voting will be conducted by electronic ballot, which will be sent to FFI members in late August. New board members will take office following the annual meeting which will be held virtually on November 9 at 9:00am Eastern Time.

[READ MORE](#)

DATES TO REMEMBER

AUG
2

FFI on Monday Summer School with Arnaud de Coninck

[LEARN MORE AND ENROLL](#)

AUG
9

FFI on Monday Summer School with Scott Peppet and Jim Coutre

[LEARN MORE AND ENROLL](#)

AUG
16

FFI on Monday Summer School with Maya Prabhu and Jim Coutre

[LEARN MORE AND ENROLL](#)

AUG
17

FFI Global Conference hotel room blocks expire

[VIEW ACCOMMODATIONS](#)

AUG
17

FFI on Monday Summer School with Lisa Morel

[LEARN MORE AND ENROLL](#)

SEPT
14-15

GEN 504 Philanthropy, Investing, and the Enterprise

[LEARN MORE AND ENROLL](#)

SEPT
21-22

GEN 503 Tools for Positive Change in Family Business Systems

[LEARN MORE AND ENROLL](#)

OCT
18-19

2021 FFI Virtual Conference

[LEARN MORE AND REGISTER](#)

OCT
21-22

2021 FFI In-Person Conference

[LEARN MORE AND REGISTER](#)