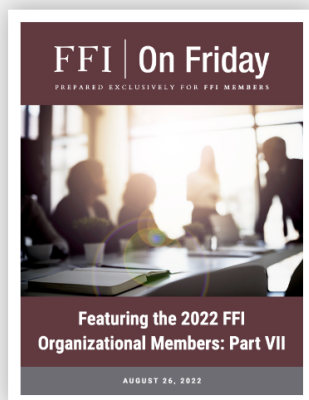




PREPARED EXCLUSIVELY FOR FFI MEMBERS

Featuring the 2022 FFI Organizational Members: Part VII

AUGUST 26, 2022



Today, we are pleased to continue our series featuring the FFI organizational members for 2022. These members include distinguished organizations, associations, and educational institutions from around the world.

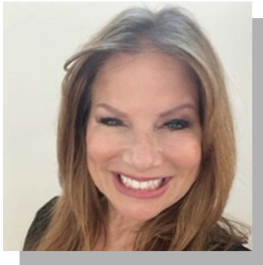
BANK OF AMERICA PRIVATE BANK



Bank of America Private Bank offers personalized strategies to help families manage the complexities of wealth. Its range of services include broad-based investment management, managing customized trusts, administering complex estates and providing cash/treasury management, reporting and accounting support to family offices.

Bank of America Private Bank's 2022 awards include Best Private Bank in North America by The Digital Banker's 2022 Global Private Banking Innovation Awards; the Family Wealth Report Award for Best National and Regional Private Bank; and the Wealth Briefing Award for Best Bank Philanthropy Offering.

FFI members are FFI Fellow Carrie R. Seligman, Charles Simonds, Elizabeth Thiessen, and Howard M. Weiss.



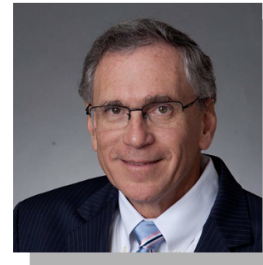
Carrie R. Seligman
FFI Fellow



Charles Simonds



Elizabeth Thiessen



Howard M. Weiss

BDO ADVISORY



BDO Advisory BV, based in the Netherlands, is a family business focused advisory firm that provides professional services to families and family enterprises to secure stability and plan for the future.

FFI members are Machiel Gosschalk, ACFBA; Desi Kloosterboer; Ruud Loos; Michel Prent, ACFBA/ACFWA; and Sanne van der Donk.



Machiel Gosschalk
ACFBA



Desi Kloosterboer



Ruud Loos



Michel Prent
ACFBA/ACFWA



Sanne van der Donk

FAMILY ENTERPRISE CANADA



Family Enterprise Canada is the national community for family business in Canada. Their goal is to ensure the long-term success and continuity of enterprising families and their family enterprises, across generations. Family Enterprise Canada empowers business families and certified Family Enterprise Advisors (FEAs) to thrive by providing a dynamic peer community, family-focused learning, relevant insights, a family enterprise specific designation and—together with the Family Enterprise Foundation—a voice for all.

FFI members are Bill Brushett, Claire Lynch, Tim Mohr, Renee Nelson, FFI Fellow Wendy Sage-Hayward, Sheila Scott, and FFI Fellow Ruth E. Steverlynck.



Bill Brushett



Claire Lynch



Tim Mohr



Renee Nelson



Wendy Sage-Hayward
FFI Fellow



Sheila Scott



Ruth E. Steverlynck
FFI Fellow

TRIBRIDGE PARTNERS

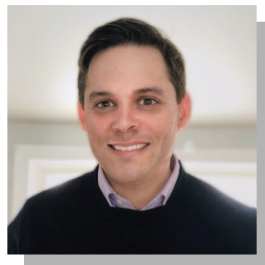


TriBridge Partners, LLC helps protect the assets of its clients by bridging the exposure gaps to create continuity through the expertise of the firm's associates in combination with strategies and solutions. The firm assists its family business clients with continuity planning, multi-generational transitions, and compensation and benefits.

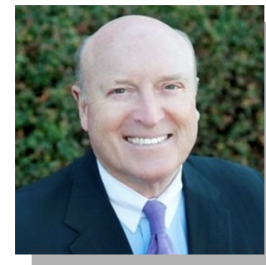
FFI members are Jason Ditto, Jay Menton, FFI Fellow David M. Morris, John C. Morris, Kim Natovitz, Chris Schneider, Sarah Speed, and Paul Younkens.



Jason Ditto



Jay Menton



David M. Morris
FFI Fellow



John C. Morris



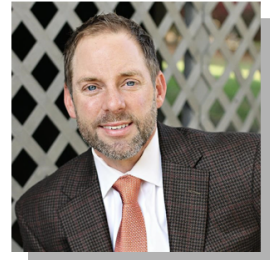
Kim Natovitz



Chris Schneider



Sarah Speed



Paul Younkens

FFI ORGANIZATIONAL MEMBERS

[VIEW COMPLETE LISTING](#)

DON'T MISS THESE TWO OPPORTUNITIES TO CONTINUE YOUR PROFESSIONAL EDUCATION THROUGH FFI'S ONLINE EDUCATIONAL PROGRAMS THIS FALL!

Tuesday, September 20 AND Wednesday, September 21 (8AM-12PM ET)

Two half-day virtual seminars

Philanthropy, Investing and the Enterprise: Advising families in pursuit of impact

[REGISTER](#)

Tuesday, October 11 AND Wednesday, October 12 (8AM-12PM ET)

Two half-day virtual seminars

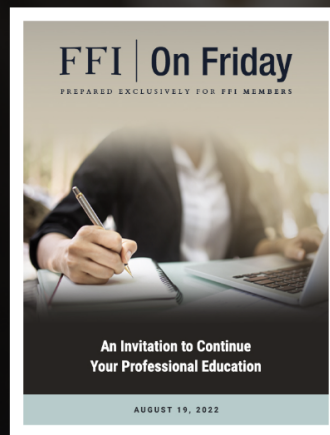
Tools for Positive Change in Family Enterprise Systems: Analysis and application

[REGISTER](#)

THE 2022 GLOBAL CONFERENCE IS OCTOBER 26 – 29!
HOTEL RESERVATIONS ARE LIMITED! BOOK YOUR ROOM TODAY.

[LEARN MORE AND REGISTER](#)

PREVIOUS EDITION



Don't miss these two opportunities to continue your professional education through FFI's online educational programs this fall!

[READ MORE](#)

DATES TO REMEMBER

AUG
31

Summer rate for 2022 conference ends

[REGISTER HERE](#)

SEP
20 & 21

Philanthropy, Investing and the Enterprise: Advising families in pursuit of impact

Two half-day virtual seminars

[LEARN MORE](#)

OCT
11 & 12

Tools for Positive Change in Family Enterprise Systems

Two half-day virtual seminars

[LEARN MORE](#)

OCT
26-29

Annual Global Conference In-person in Cambridge, MA

[LEARN MORE AND REGISTER](#)