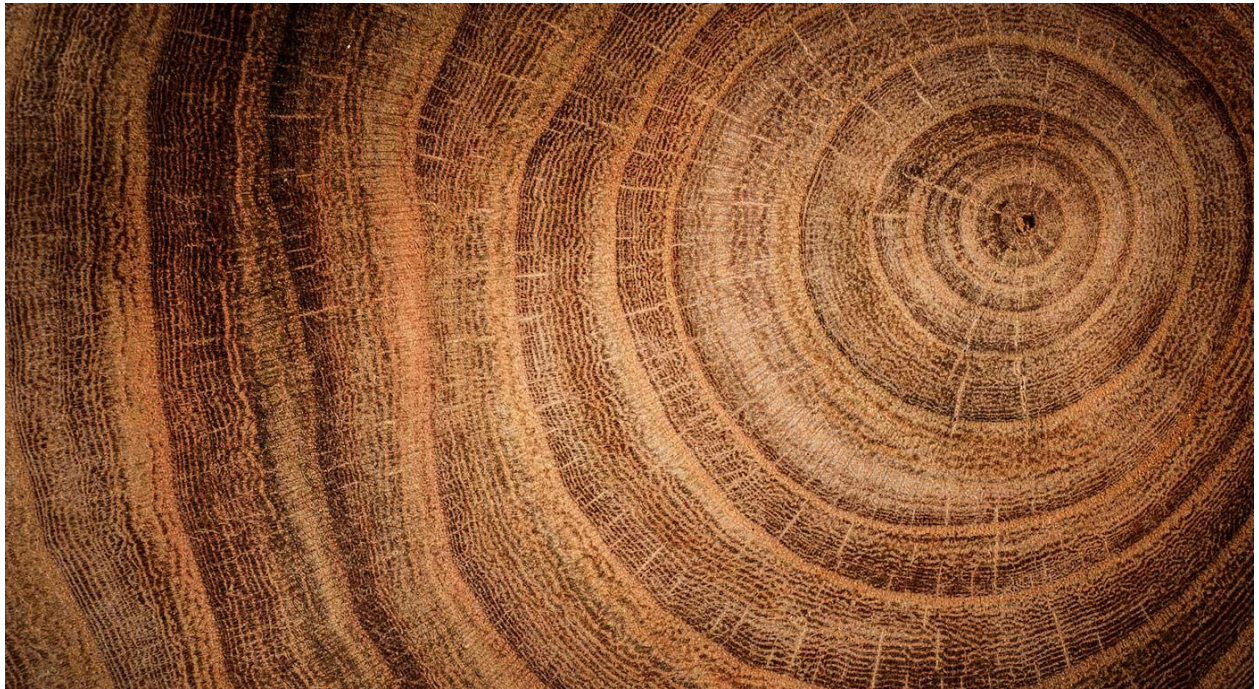
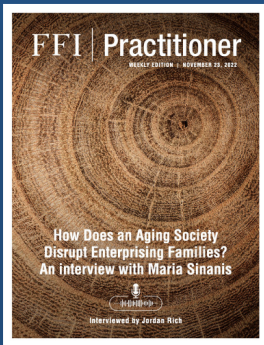


PODCAST

How Does an Aging Society Disrupt Enterprising Families? An interview with Maria Sinanis

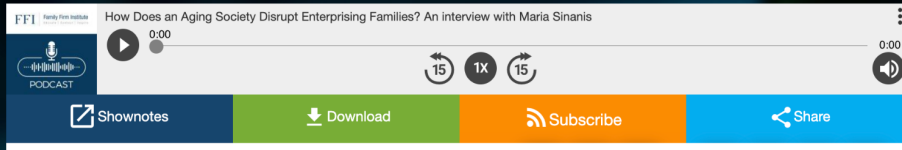
WEEKLY EDITION • **NOVEMBER 23, 2022**





From FFI Practitioner

This week's FFI Practitioner podcast, which continues our series of interviews from the FFI Global Conference speakers, is a conversation with Maria Sinanis of Cambridge Family Enterprise Group. At the 2022 FFI Global Conference, she presented the session "How Does an Aging Society Disrupt Enterprising Families?"



ABOUT THE CONTRIBUTOR

Maria Sinanis is a senior advisor and partner at Cambridge Family Enterprise Group, an international advisory firm serving family enterprises. She is a fellow at Cambridge Institute for Family Enterprise, an education and research institute dedicated to the significant issues family enterprises face. She can be contacted at msinanis@cfeg.com.

INTERVIEWER: **Jordan Rich** is celebrating a quarter century at one of America's top legacy radio stations, interviewing thousands of celebrities, authors, actors, and interesting personalities throughout his career. Jordan is co-owner of Chart Productions Inc. and teaches voice-over acting. His main focus these days is in podcast creation and production, featuring conversations with the world's most creative people.

Related Articles

If you enjoyed this podcast interview, check out these FFI Practitioner issues:



"The Evolving Dynamics of Next-Generation Philanthropy" by Jon Quinn

[LISTEN NOW](#)



"Reverse Succession in Family Businesses: A pandemic effect" by Luz Leyda Vega-Rosado

[READ MORE](#)



"Longevity in the Family Business Context: Implications for Leadership and Succession" by Judy Green and Patricia M. Annino

[READ MORE](#)